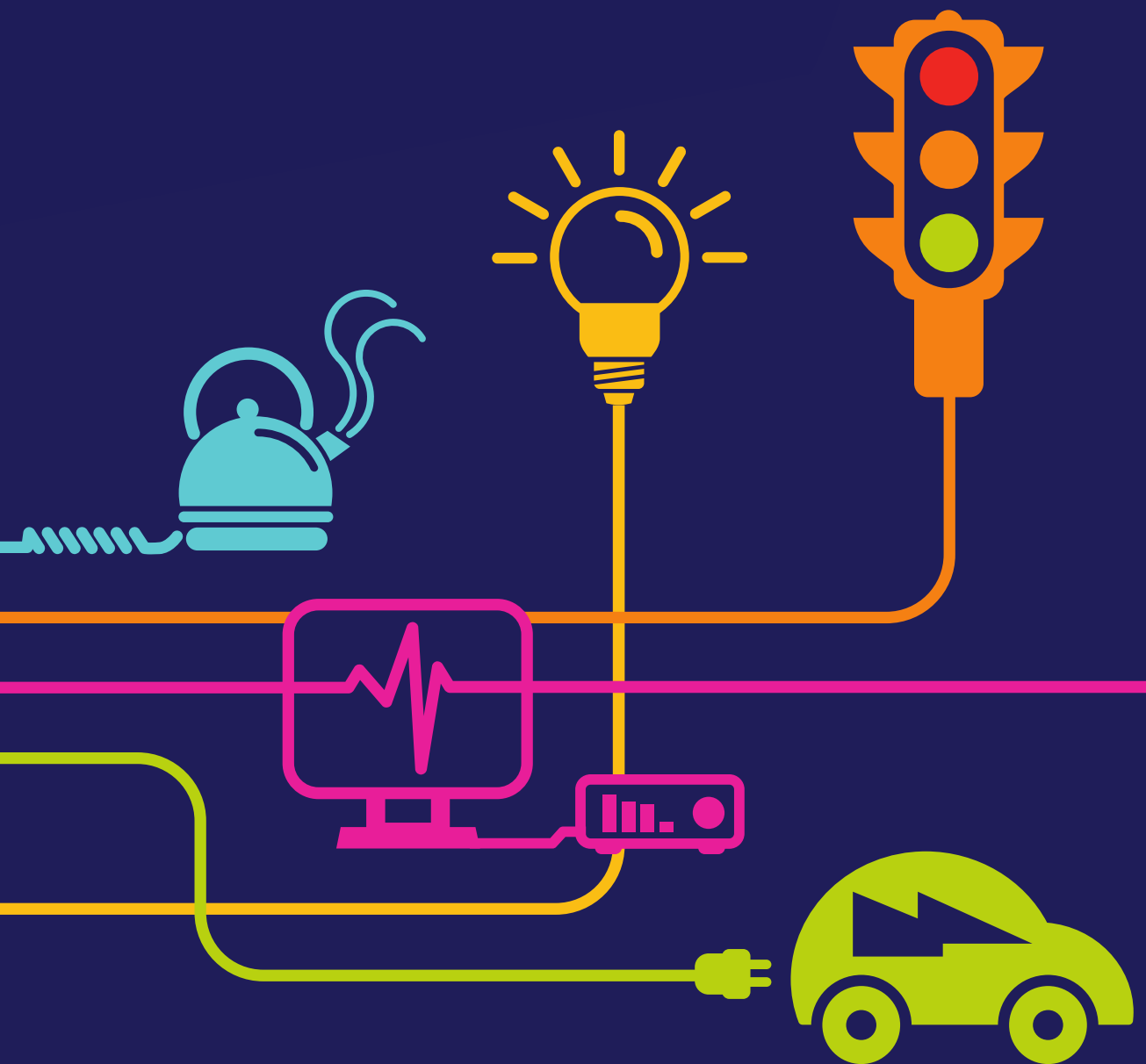


DOCUMENT 5.7.1.14

Landscape Mitigation Proposals Braint THH & CSEC Chapter 7 – Figure 14

National Grid (North Wales Connection Project)

*Regulation 5(2)(a) including (l) and (m) of the Infrastructure Planning
(Applications: Prescribed Forms and Procedure) Regulations 2009*





Planting Schedule for Braint Tunnel Head House and Cable Sealing End Compound

WOODLAND TREE SPECIES

No.	Species	Abbreviation	Size (cm)	Root Type	Specification
22	Alnus glutinosa	Aln glu	12-14	RB	HS, 300-350cm, bushy
25	Betula pubescens	Bet pub	12-14	RB	HS, 300-350cm, bushy
14	Carpinus betulus	Car bet	14-16	RB	EHS, 425-450cm, bushy
19	Fagus sylvatica	Fag syl	14-16	RB	EHS, 425-450cm, bushy
17	Quercus robur	Que rob	12-14	RB	HS, 300-350cm, bushy
29	Quercus petraea	Que pet	14-16	RB	EHS, 425-450cm, bushy
15	Pinus sylvestris	Pin syl	14-16	RB	EHS, 425-450cm, bushy
19	Sorbus acuparia	Sor acu	12-14	RB	HS, 300-350cm, bushy

WOODLAND UNDERSTOREY

(11985 m² planted @ 1/m², individual varieties to be planted in groups of approximately 3-7)

No.	Species	% of Mix	Size (cm)	Root Type
2397	Crataegus monogyna	20	60/80	B
2397	Corylus avellana	20	60/80	B
1199	Rosa canina	10	40/60	B
1199	Rosa pimpinellifolia	10	40/60	B
1798	Prunus spinosa	15	60/90	B
599	Salix cinerea	5	60/80	B
1798	Sambucus nigra	15	60/80	B
599	Ulex europaeus	5	40/60	2L Pot

LOW HEIGHT PLANTING MIX FOR UNDER OVERHEAD LINE

(4820 m² planted @ 1/m², individual varieties to be planted in groups of approximately 5-9)

No.	Species	% of Mix	Size (cm)	Root Type
482	Crataegus monogyna	10	60/80	B
482	Corylus avellana	10	60/80	B
482	Cornus sanguinea	10	40/60	B
723	Dryopteris dilatata	15	40/60	2L Pot
241	Hedera helix	5	10/20	2L Pot
241	Ligustrum vulgare	5	40/60	2L Pot
241	Lonicera periclymenum	5	40/60	2L Pot
482	Rosa pimpinellifolia	10	40/60	2L Pot
482	Rosa canina	10	40/60	B
241	Salix cineria	5	40/60	B
241	Ulex europaeus	5	40/60	2L Pot
482	Viburnum opulus	10	40/60	B

HEDGEROW MIX

(840 m @ 6/m in a double staggered row, individual varieties to be planted in groups of approximately 3-7)

No.	Species	% of Mix	Size (cm)	Root Type
1008	Crataegus monogyna	20	40/60	B
756	Corylus avellana	15	40/60	B
252	Ilex aquifolium	5	40/60	2L Pot
1008	Prunus spinosa	20	40/60	B
756	Rosa canina	15	40/60	B
504	Salix cinerea	10	40/60	B
756	Sambucus nigra	15	40/60	B

AQUATIC PLANTING

(660 m² planted @ 4/m², individual varieties to be planted in groups of approximately 3-7)

No.	Species	% of Mix	Size (cm)	Root Type
528	Caltha palustris	20	20/30	1L
528	Iris pseudacorus	20	40/50	2L
528	Iris sibirica	20	40/50	2L
264	Juncus effusus	10	40/50	2L
528	Myosotis scopioides	20	20/30	1L
264	Typha angustifolia	10	20/30	2L

GRASS SEED MIXES

24995 m² Low Maintenance Grass Mix @ 4g/m² - Emorsgate EM10 Tussock Mixture or equivalent approved

6045 m² Meadow Grass Mix @ 4g/m² - Emorsgate EM1 Meadow Mix or equivalent approved

NWC ROUTE LEGEND

LEGEND

- VEGETATION RETAINED
- EXISTING INDIVIDUAL TREES
- HARD SURFACING (REFER TO ENGINEERS DRAWINGS FOR DETAILS)
- POTENTIAL SALINE TREATMENT AREA
- ATTENUATION POND
- PROPOSED CLODDIAU (STONE FACED BANK WITH HEDGEROW)
- PROPOSED WOODLAND UNDERSTOREY MIX
- PROPOSED EXTRA HEAVY STANDARD TREES
- PROPOSED STANDARD/FEATHERED TREES
- PROPOSED LOW HEIGHT PLANTING MIX
- AREAS OF REINSTATED PASTURE
- PROPOSED LOW MAINTENANCE GRASS MIX
- PROPOSED MEADOW PLANTING
- PROPOSED AQUATIC PLANTING

NOTES

SEE THE DESIGN PLANS (**DOCUMENT 4.13**) FOR TUNNEL HEAD HOUSE AND CABLE SEALING END COMPOUND LAYOUT AND SURFACING DETAILS

B	14/08/18	ENVIRONMENTAL STATEMENT	KM	HJ	SG
Rev	Date	Description	GIS	Chk	App

nationalgrid

Scheme: NORTH WALES CONNECTION PROJECT

Document Number: 5.7.1.14

Document Title: FIGURE 7.14 LANDSCAPE MITIGATION PROPOSALS BRAINT THH & CSEC

Creator: KM	Date: 18/07/2018	Checker: HJ	Date: 18/07/2018	Approver: SG	Date: 19/07/2018
Document Type: FIGURE	Scale: 1:1000	Format: A1	Sheets: 1 of 1	Rev: B	

0 25 50 100 Metres